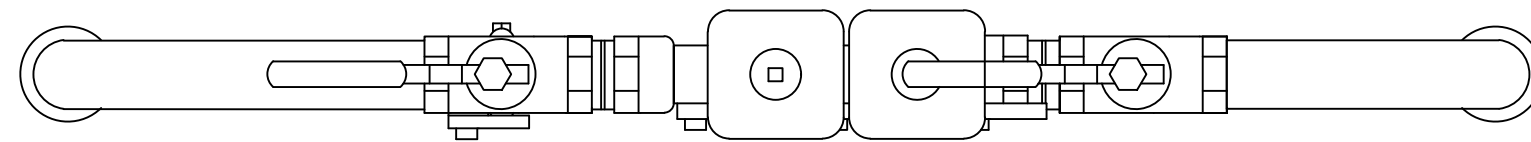


NOTE:
BACKFLOW PREVENTION
ASSEMBLY MUST BE
WITHIN 3 FT OF WATER
METER



*TYPICAL 1" TO 2" DOUBLE
CHECK VALVE ASSEMBLY ONLY
BACKFLOW PREVENTION ASSEMBLY
ABOVE GROUND INSTALLATION*

NOT TO SCALE